



# Ringve – from country estate to a modern museum

IVAR ROGER HANSEN, DIRECTOR

08.10.15



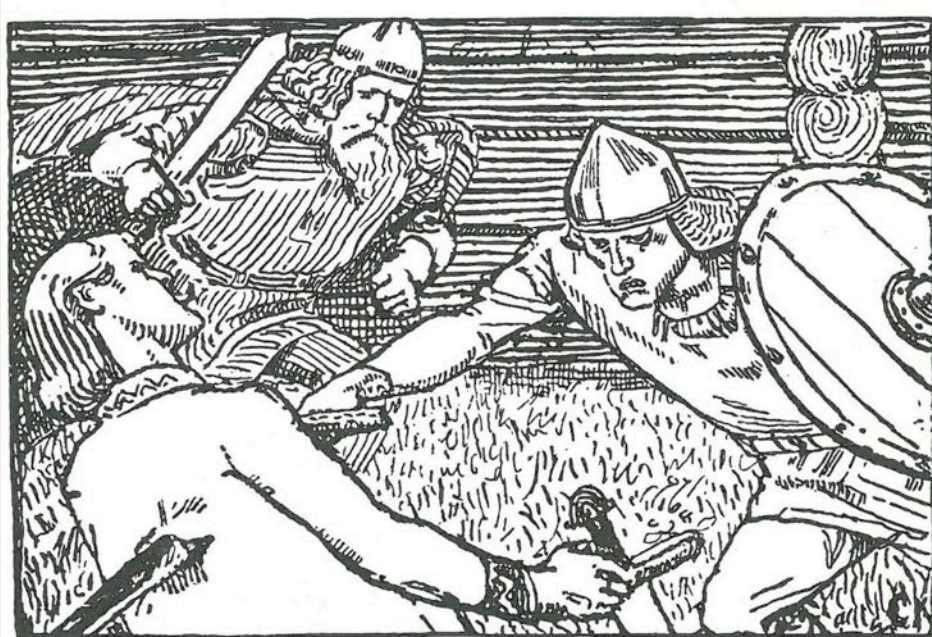
GRENSELOSE KULTUROPPLEVELSER

Ringve  
MUSIKK MUSEUM

# The Lade peninsula



# Håkon, Earl of Lade ( 998 – 1029)



# Olav Haraldson (St. Olav)





GRENSELOSE KULTUROPPLEVELSER

Pingve  
MUSIKK MUSEUM

# Ringve and Smedstuen about 1890



# Buildings representing four centuries

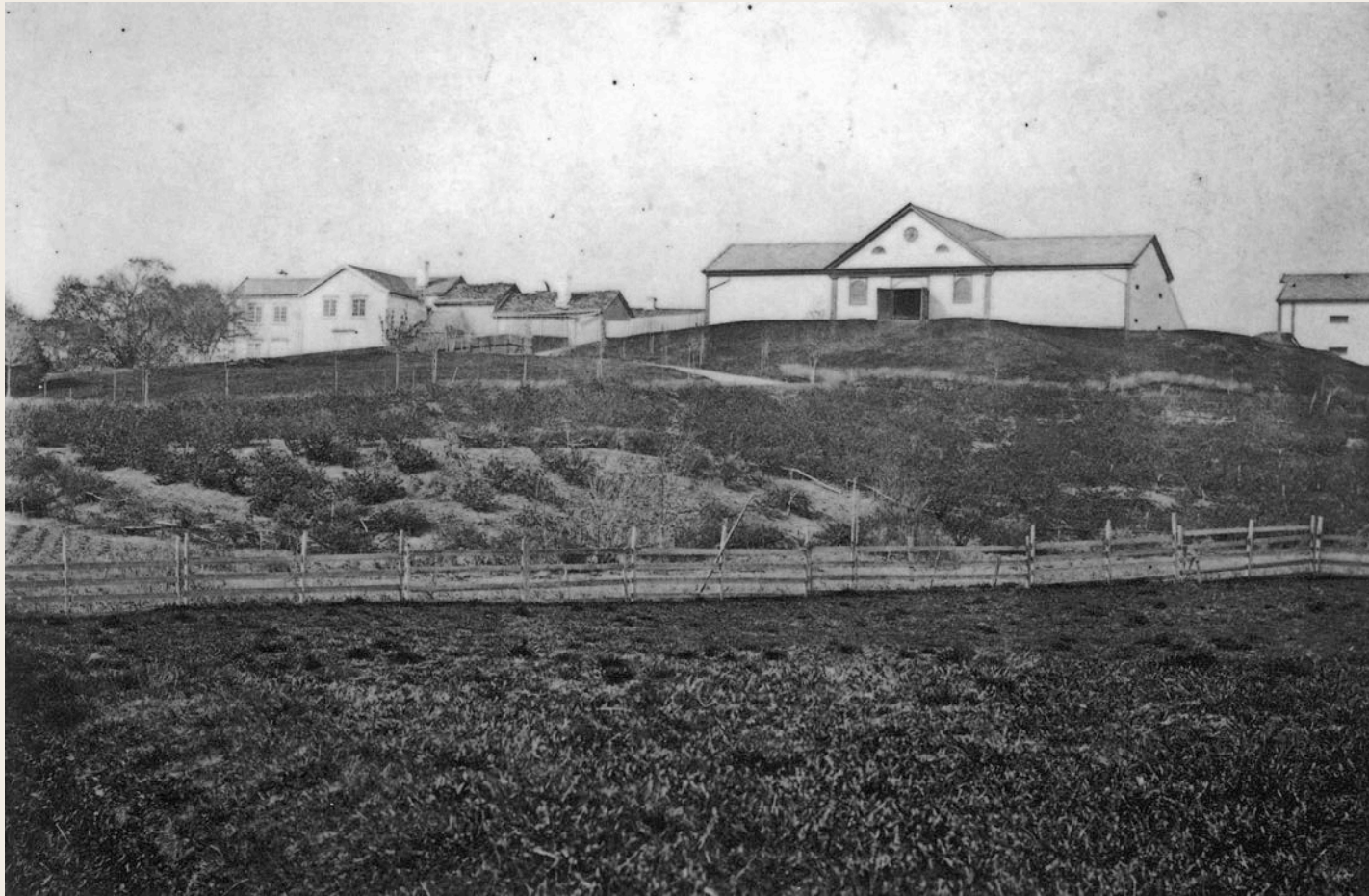


# Peter Wessel Tordenskiold





Ca. 1870



GRENSELOSE KULTUROPPLEVELSER

Pingve  
MUSIKK MUSEUM

# Commercial for cherry juice from Ringve





GRENSELOSE KULTUROPPLEVELSER

Ringve  
MUSIKK MUSEUM



GRENSELOSE KULTUROPPLEVELSER

Pingve  
MUSIKK MUSEUM

# Christian and Victoria Bachke



# 1950: The Tordenskiold Museum opens





GRENSELOSE KULTUROPPLEVELSER

Pingve  
MUSIKK MUSEUM

# 1952: The Music Museum opens

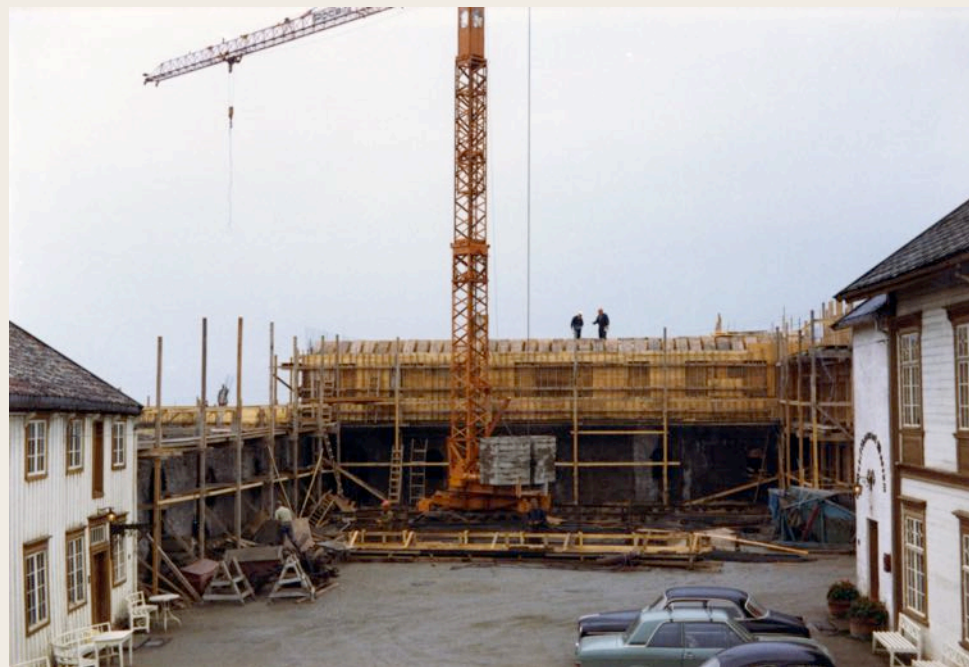




# The Beethoven and Chopin rooms



# 1962: Concert Hall in the Barn





GRENSELOSE KULTUROPPLEVELSER

Pingve  
MUSIKK MUSEUM

# 1972: The Botanical Garden opens



GRENSELOSE KULTUROPPLEVELSER

Ringve  
MUSIKK MUSEUM

# 1972: Exhibition in the Barn



# 1979: New exhibition in the Barn



# 2009: New Museum Organisation

Ringve is a part of the consolidated museum organisation The Museums of South- Trøndelag

MiST



MUSEENE I  
SØR-TRØNDELAG



GRENSELOSE KULTUROPPLEVELSER



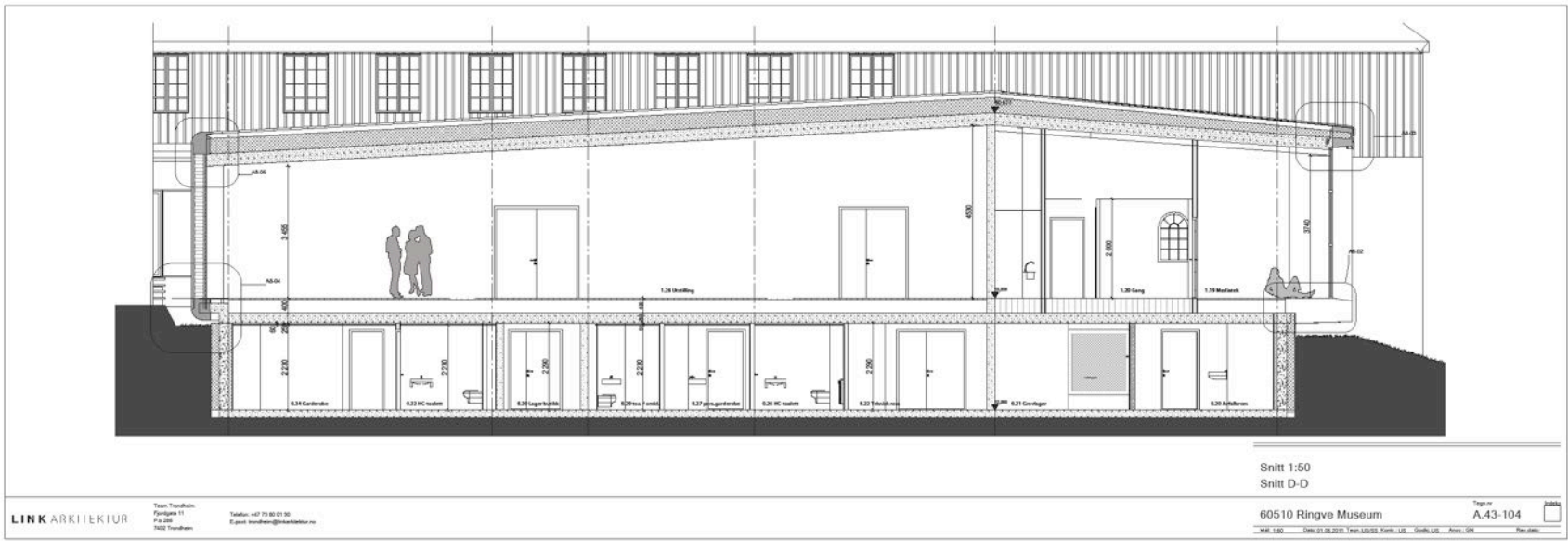
# 2013: The new building



GRENSELOSE KULTUROPPLEVELSER

Ringve  
MUSIKK MUSEUM





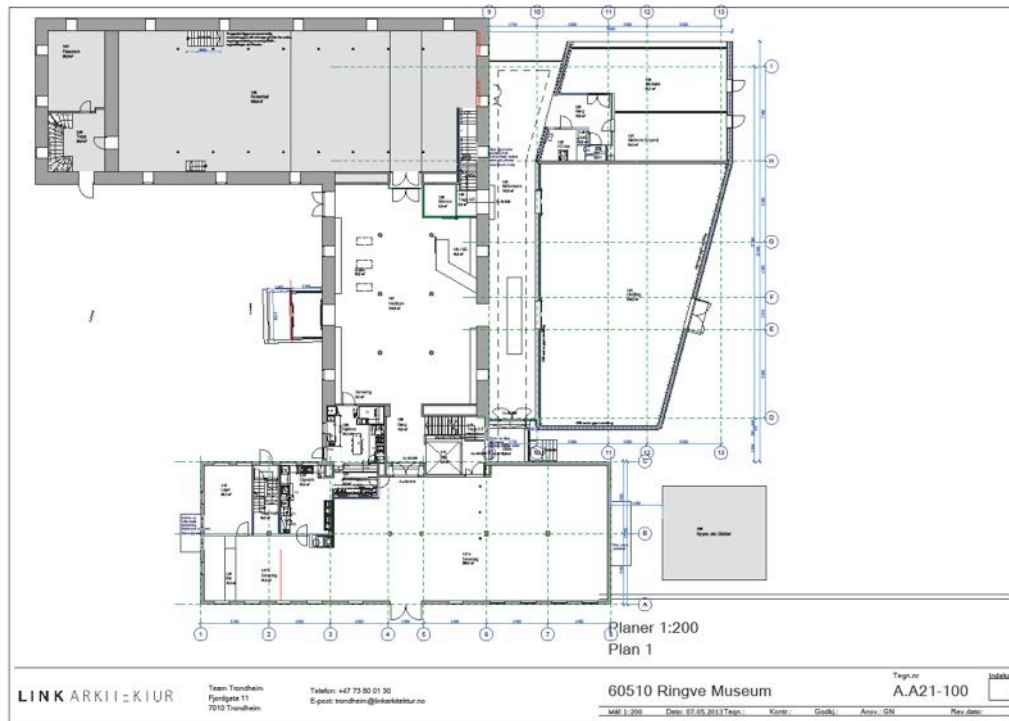
GRENSELOSE KULTUROPPLEVELSER





GRENSELOSE KULTUROPPLEVELSER

Ringve  
MUSIKK MUSEUM



GRENSELOSE KULTUROPPLEVELSER





GRENSELOSE KULTUROPPLEVELSER

Pingve  
MUSIKK MUSEUM

# Ringve Music Museum – some facts

- Collection: 2 000 instruments
- Visitors: 30 000 (2014) + 15 000 in the restaurant
- Staff: 14 persons
- Budget: Ca. NOK 19 000 000 = € 2 100 000



# 2015: The fire August 3.

